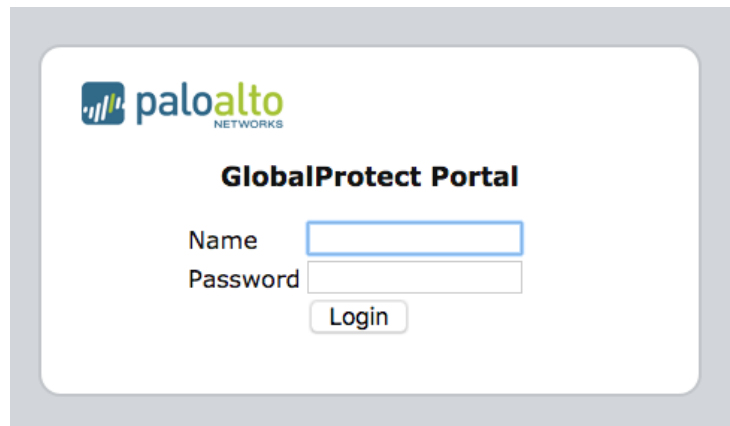


# Installation Guide: GlobalProtect Software for Windows

1. To install the GlobalProtect Software type the IP address in the URL:  
<https://128.228.93.182>



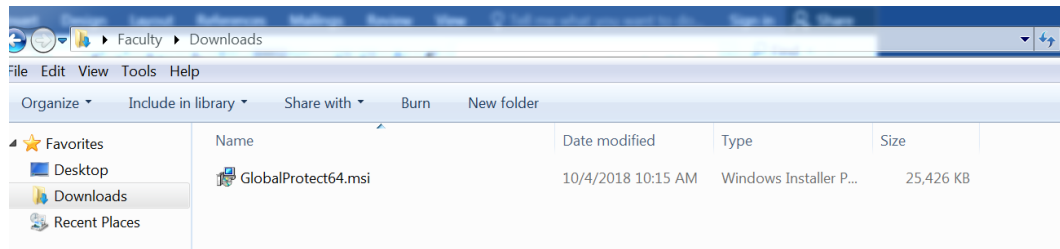
2. The GlobalProtect Portal will appear in which you enter your email username (first initial last name) and the password is your email password.

A screenshot of the GlobalProtect Portal login page. The page features the Palo Alto Networks logo at the top left. Below the logo, the text "GlobalProtect Portal" is centered. There are two input fields: "Name" and "Password". Below the "Password" field is a "Login" button.

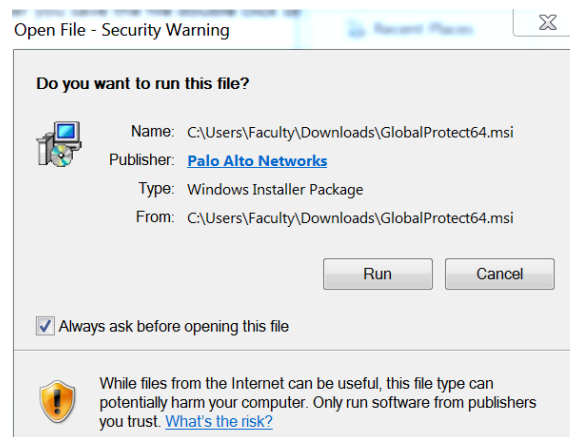
3. Once you have logged in the download option will appear from which you must select the download that is suitable for your computer such as the 32 bit or the 64 bit.



4. After you save the file double click on the file from the downloads folder to run it



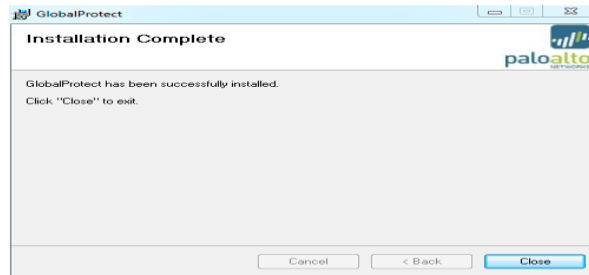
5. Click Run to begin installing the software



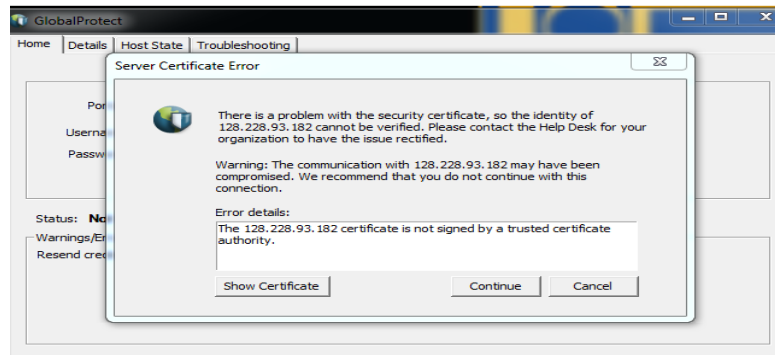
6. When the setup wizard appears click next to continue



7. Once the installation is complete click close



8. Click on the start button and search for GlobalProtect. Then double click on it to open the login window. Enter the same IP address: 128.228.93.182 for the Portal and then enter your username (first initial last name) and the password for your city-tech email. Once you click connect a certificate window will appear click continue.



9. Once you have successfully logged on the status will read connected.

